
CHILD LABOR ISSUE IN COCOA SECTOR

**UPDATE ON COCOA CERTIFICATION
PROCESS IN COTE D'IVOIRE**

World Cocoa Foundation Partnership Meeting, 23 – 24 May 2007, Amsterdam

INSTITUTIONAL FRAMEWORK

Steering committee
President: Prime Minister

Executive Body

**Finance and
Administration**

Technical

Communication

CONTENTS

A - REVIEW

**B - NEW CERTIFICATION PILOT
SURVEY**

C - ONGOING REMEDIATION ACTIONS

D - WAY FORWARD

E - KEY FACTORS FOR SUCCESS

F - CONCLUSION

A- REVIEW

■ **Certification: our understanding**

Regular, credible, financially affordable system to evaluate and monitor the child labor in cocoa farms re ILO conventions 138 and 182, and also adult labor (ILO C 29)

■ **The process**

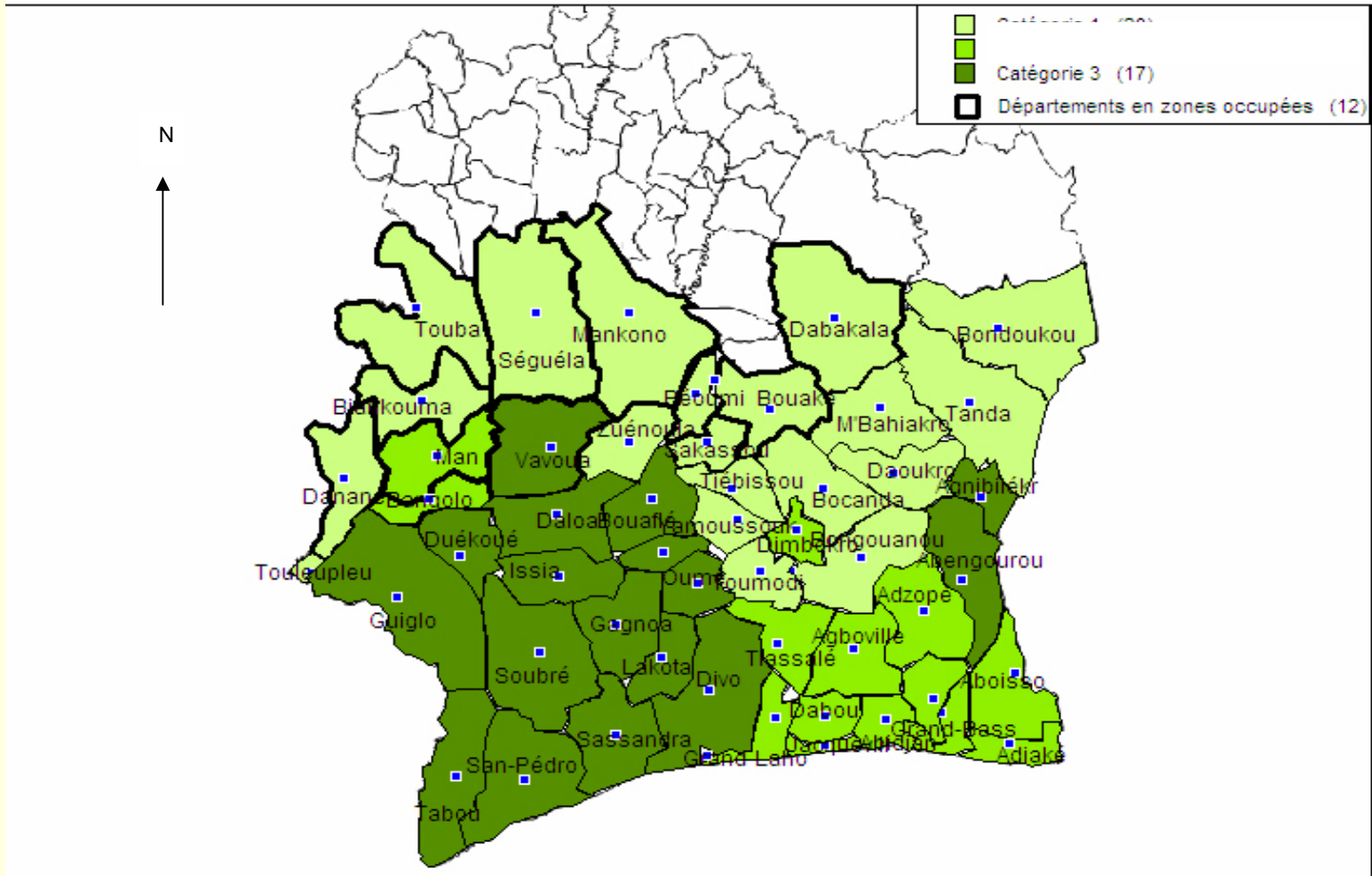
- **Initial survey**
- **Report release**
- **Remediation actions**
- **Independent Verification**

A- REVIEW

- **Learning and output from the pilot project conducted in Oume district**
 - **Possible implementation of CLMS at community level**
 - **Strong commitment of local authorities**
 - **Poverty in rural area = Child labor**
 - **Methodological guide**
 - **Creation of:**
 - **Dedicated questionnaire**
 - **Dedicated data base**
 - **Bi-lingual website www.cacao.ci**

A- REVIEW

■ Categorization of production areas



B - CERTIFICATION PILOT SURVEY

- **Random sampling for the pilot survey :**
 - **3 departments**
Soubré and Agnibilékrou from category 3
Tiassalé from category 2
 - **2 villages in each department**
 - **20 heads of household per village**
 - **5 children and 5 adult workers from each household**
- **3 teams of 2 enumerators (including 1 woman) in charge with the surveys**

B - CERTIFICATION PILOT SURVEY

■ Questionnaires

Fields of interest

- Living and working conditions, hazardous works
- Trafficking
- Forced labor
- Education

4 questionnaires targeting:

- Community leaders
- Heads of household
- Children
- Adult workers

B - CERTIFICATION PILOT SURVEY

- **Training of the enumerators**
 - **Concept review**
 - **WFCL**
 - **Forced Adult Labor**
 - **Trafficking**
 - **Team work**
 - **Individual interview (head of household, child and adult worker)**
- **Elaboration of an implementation handbook**
 - **Baseline principles of the survey**
 - **Ground implementation process (5 steps)**

B - CERTIFICATION PILOT SURVEY

1: Training the enumerators



2: Informing the local officials



3: Official launch in the village



4: Official launch in the village



B - CERTIFICATION PILOT SURVEY

5: Public random selection of heads of household



6: Guided visit of the village



7: Individual survey



B - CERTIFICATION PILOT SURVEY

- **Partners**
 - **Steering committee**
 - **Other ministries**
 - **Producers**
 - **University**
 - **Industry**
 - **Consultants**

C - ONGOING REMEDIATION ACTIONS

■ Ministries

- Draft law aiming at forbidding WFCL and child trafficking
- Training of governmental actors
- Institutional framework
- Interception of children, suing of traffickers

■ Partners

- Local industries
 - Sensitization and training of cocoa producers (spraying of chemicals, etc.)
 - Setting of school programs
 - Support to the coop' on social standards (SERAP)
 - PEFACI (with the European Institute for Development and cooperation) aiming at building 40 schools in 5 years
- GTZ, ICI, IFESH, STCP, WINROCK CLASSE, etc.
 - Setting of villages' committees
 - Running of working group on social protection (edition of booklets)
 - Training of community leaders, sensitization of producers, by local radios and didactic movies
 - Training of journalists, check points policemen, executive of the agriculture services
 - Extension of farmers field schools
 - Setting of literacy centres

D - THE WAY FORWARD

- **Complete survey**
- **Survey provisory report**
- **National validation workshop**
- **Survey final report**
- **Remediation framework**
- **Verification**

E - KEY FACTORS FOR SUCCESS

- **Government coordination of all ground actions;**
- **Effective involvement in remediation actions of national stakeholders;**
- **Elaboration of evaluation guide for ground actions;**
- **Strong financial involvement of all partners, especially in rural development programs by donors in view to reduce poverty;**
- **Implementation of a consensual and credible independent verification system.**

F - CONCLUSION

- **Strong commitment of Cote d'Ivoire to address child labor issue in a sustainable way**
- **Strong commitment of Cote d'Ivoire to address poverty in rural areas**
- **Strong expectation of joint actions of all stakeholders (national and international)**



Thank you for your kind attention