

Cocoa Futures:

Returns to farmers, industry and environment
from agroforestry investments



World Cocoa Foundation Meeting, Amsterdam, 23-24 May 2007

Objectives of the Session:

1. Clarify the scope for cocoa agroforestry
2. Raise awareness of the opportunities and benefits of cocoa agroforestry
3. Profile the new INAFORESTA network and seek wider participation
4. Prompt new investment and support for cocoa agroforestry
5. Solicit additional ideas to progress cocoa agroforestry

Session Outline

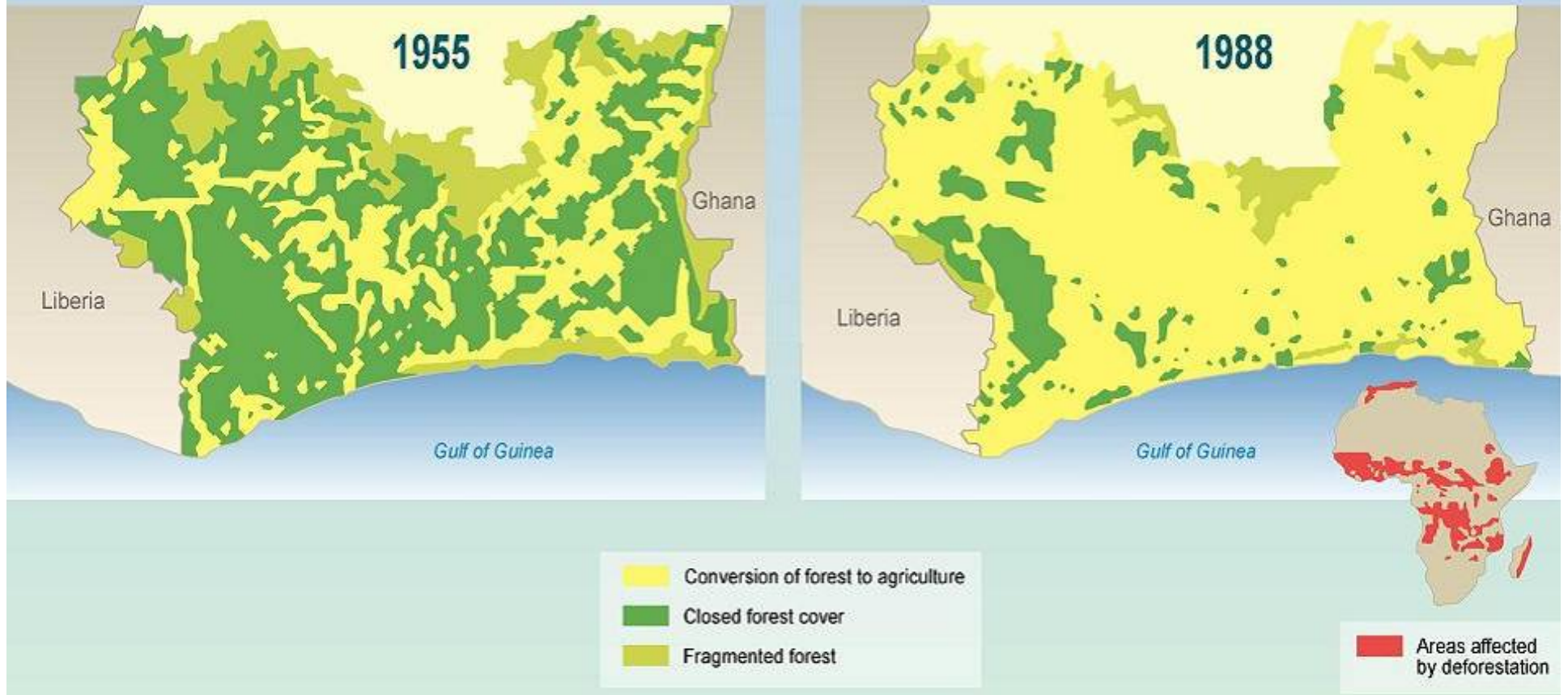
- 1430-14.50
 - Introduction of Panelists
 - solicit from audience their expectations of cocoa agroforestry
 - History, overview
- 14.50-15.05
 - Presentation of INAFORESTA
- 15.05-15.25
 - Collaborative Programme Perspective (STCP)
Using African examples
- 15.25-15.45
 - Research and Development Institute Perspective
- 15.45-16.05
 - Corporate Perspective
Using Asian examples, including a critique of industry
- 16.05-16.30
 - Moderated discussion with audience
- 16.30-16.45
 - Next steps, Follow-up, Commitments
- 16.45-17.00
 - Closing remarks from Panelists



Oil reserves – running out (50-150 years)

What of forest reserves? for new cocoa

Deforestation in West Africa: Case Côte-d'Ivoire

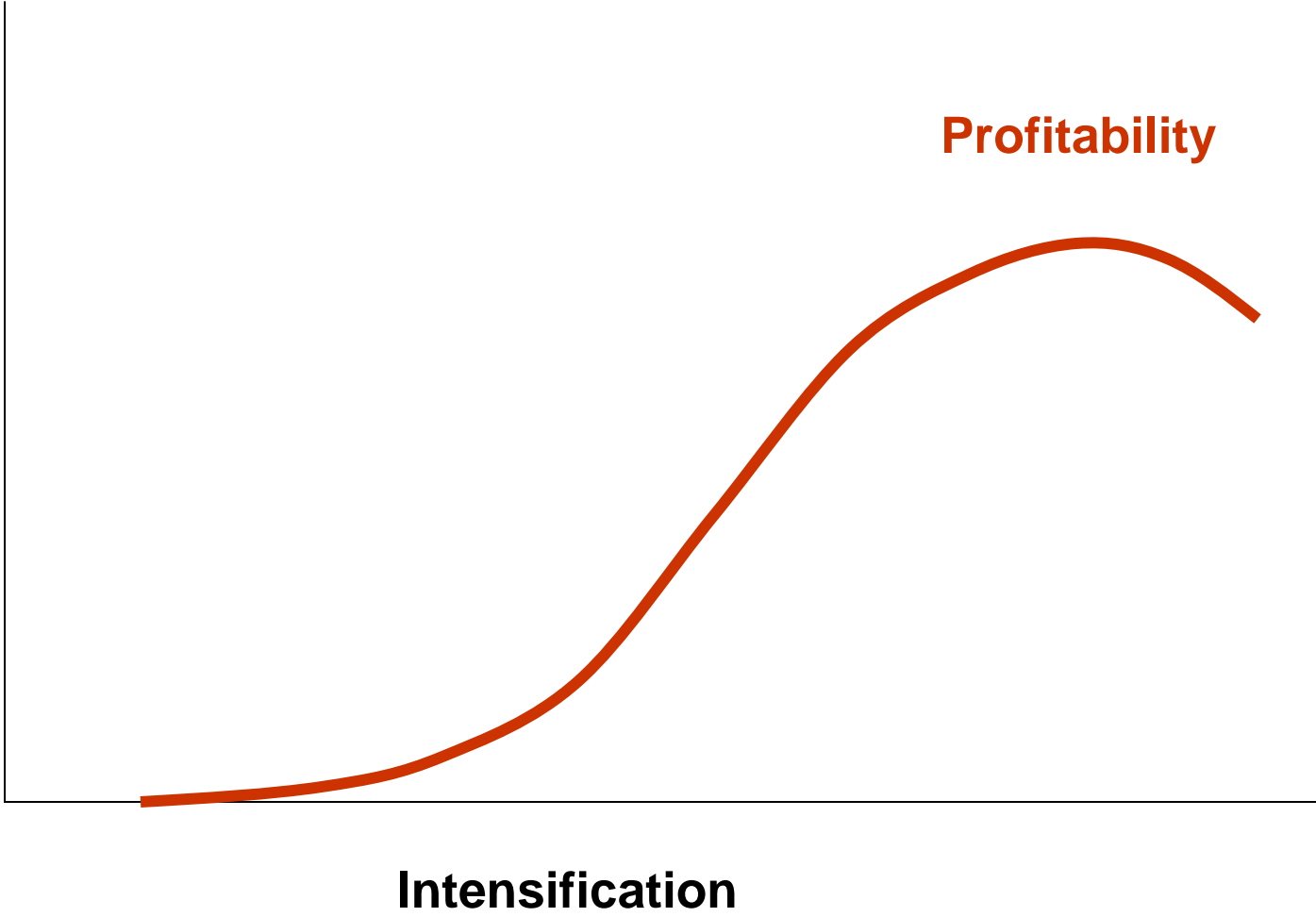


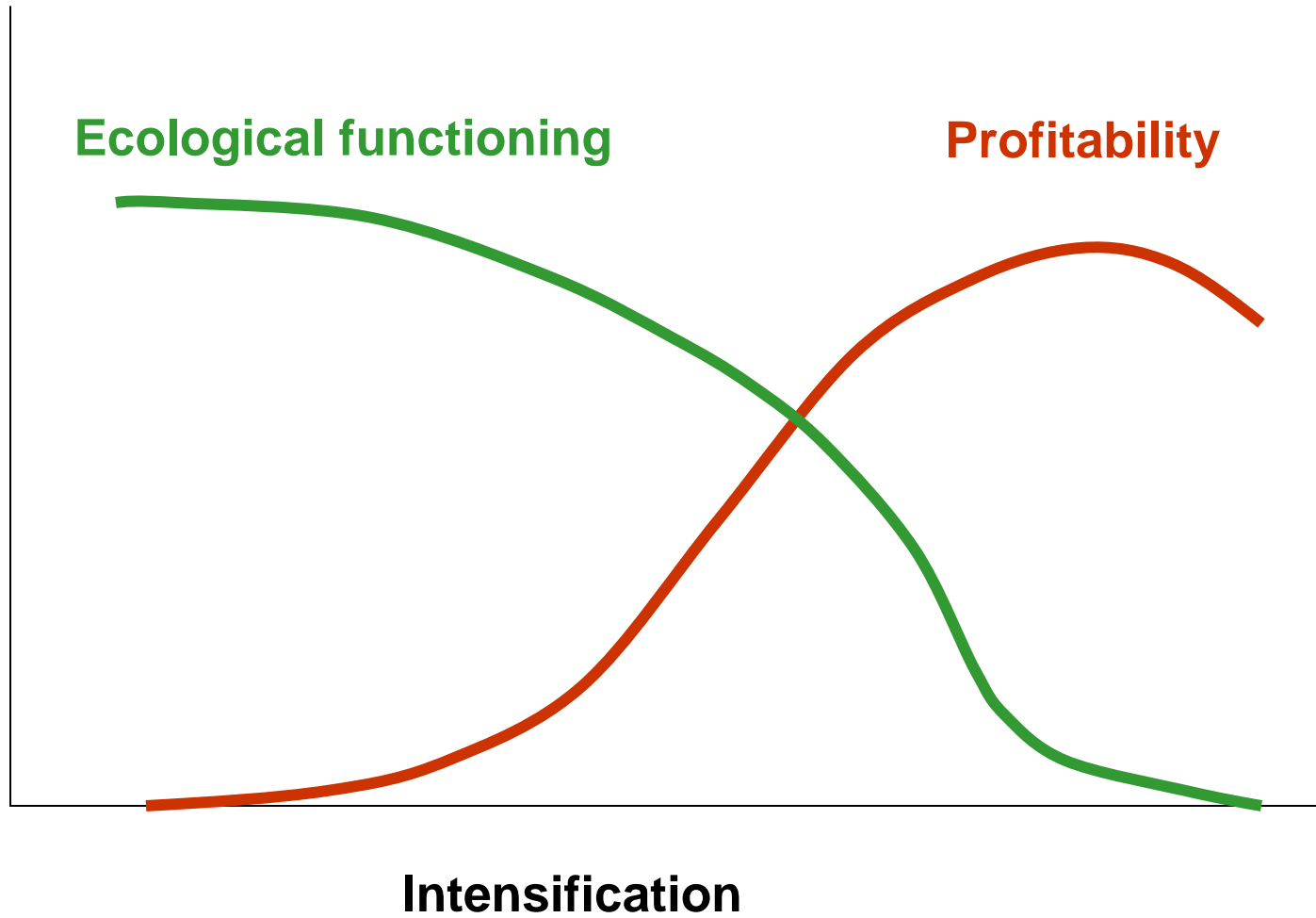
	Forest area (ha) 2000	Years to exhaust forest if 5% new planting each year in forest
Cote d'Ivoire	7,100,000	60
Ghana	6,300,000	100
Cameroon	23,800,000	1300
Nigeria	13,500,000	360

Degree of shade for cocoa in West Africa

	Current Proportion	Future Proportion
Grown under remnant forest shade	55%	25%
Grown under planted shade	25%	50%
Grown under no shade	20%	25%



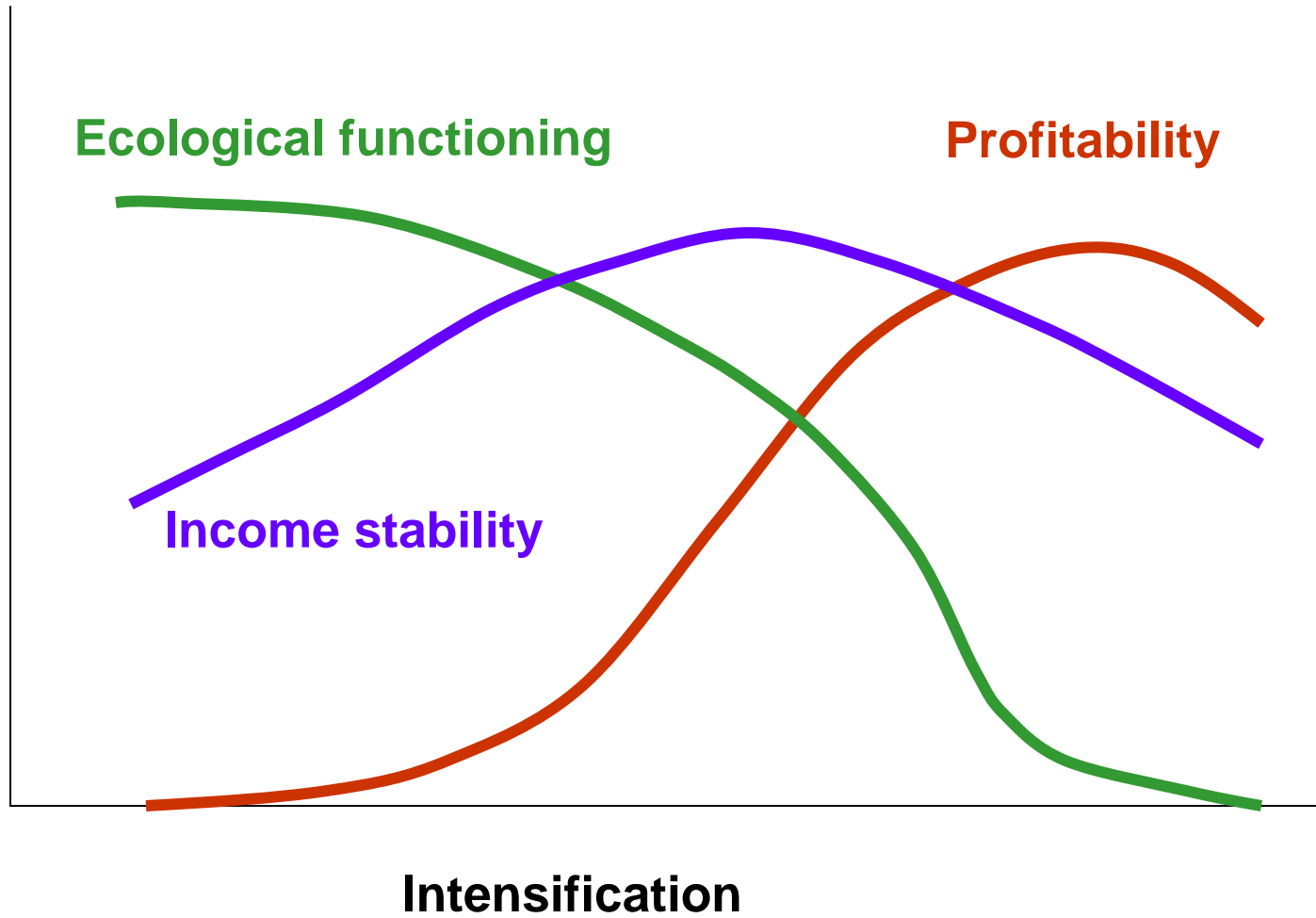


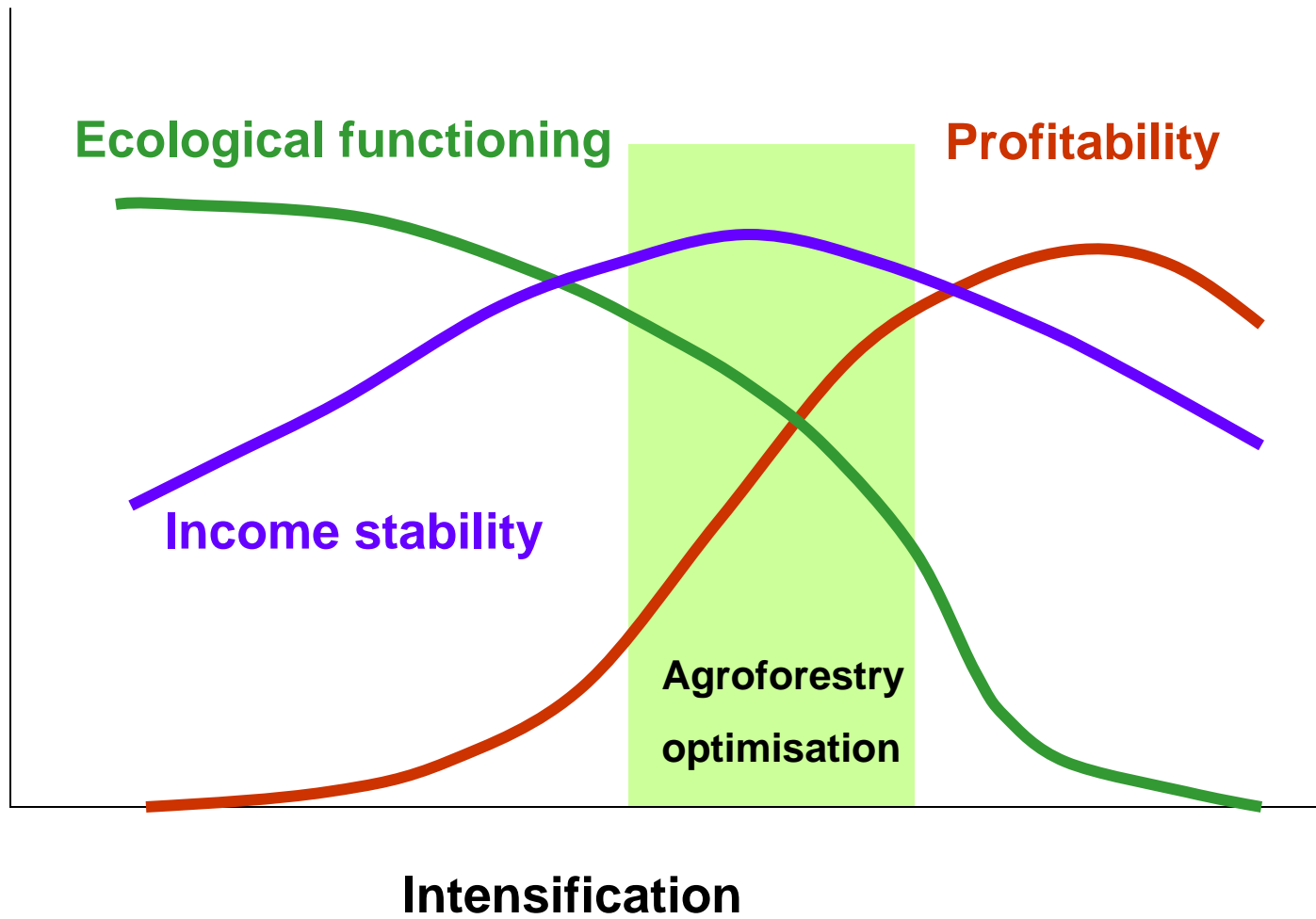


Ecological functioning

Profitability

Intensification





Diversification

Biodiversity

How much is enough?

When do you know you have enough?

Can you have too much?

What returns does the farmer get for biodiversity friendly cocoa?



Income scenarios with introduction of new enterprise

Other enterprises

Cocoa
enterprise

	lower	same	higher
lower			
same		*	
higher			

Income scenarios with introduction of new enterprise

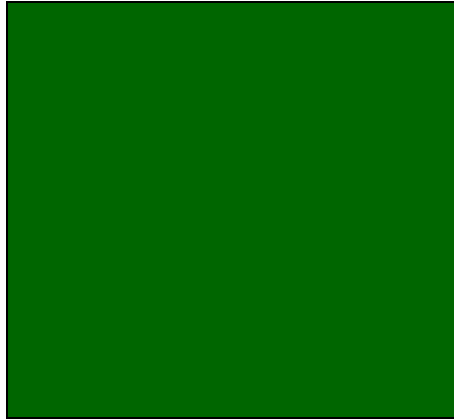
Other enterprises

Cocoa
enterprise

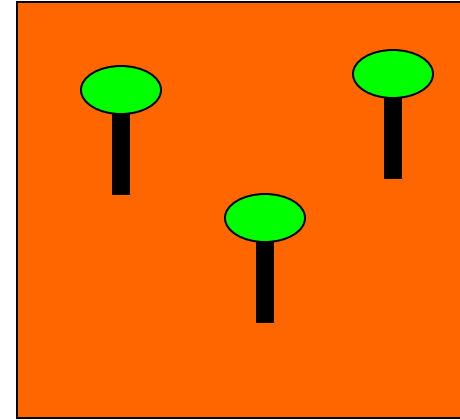
	lower	same	higher
lower			
same		*	→
higher		↓	↘

... market research on prices, volumes, actors, margins, timing, etc,

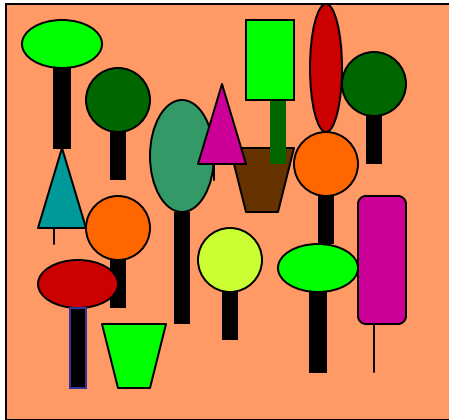




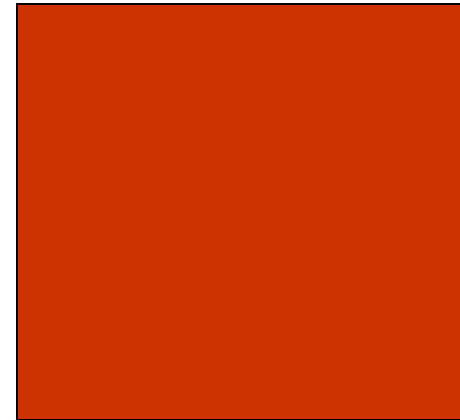
Natural forest



Lightly shaded
monoculture



cocoa
agroforestry



monoculture
cocoa

